

# ISLA VERDE OF WELLINGTON RESIDENTIAL REPLAT NO. 1

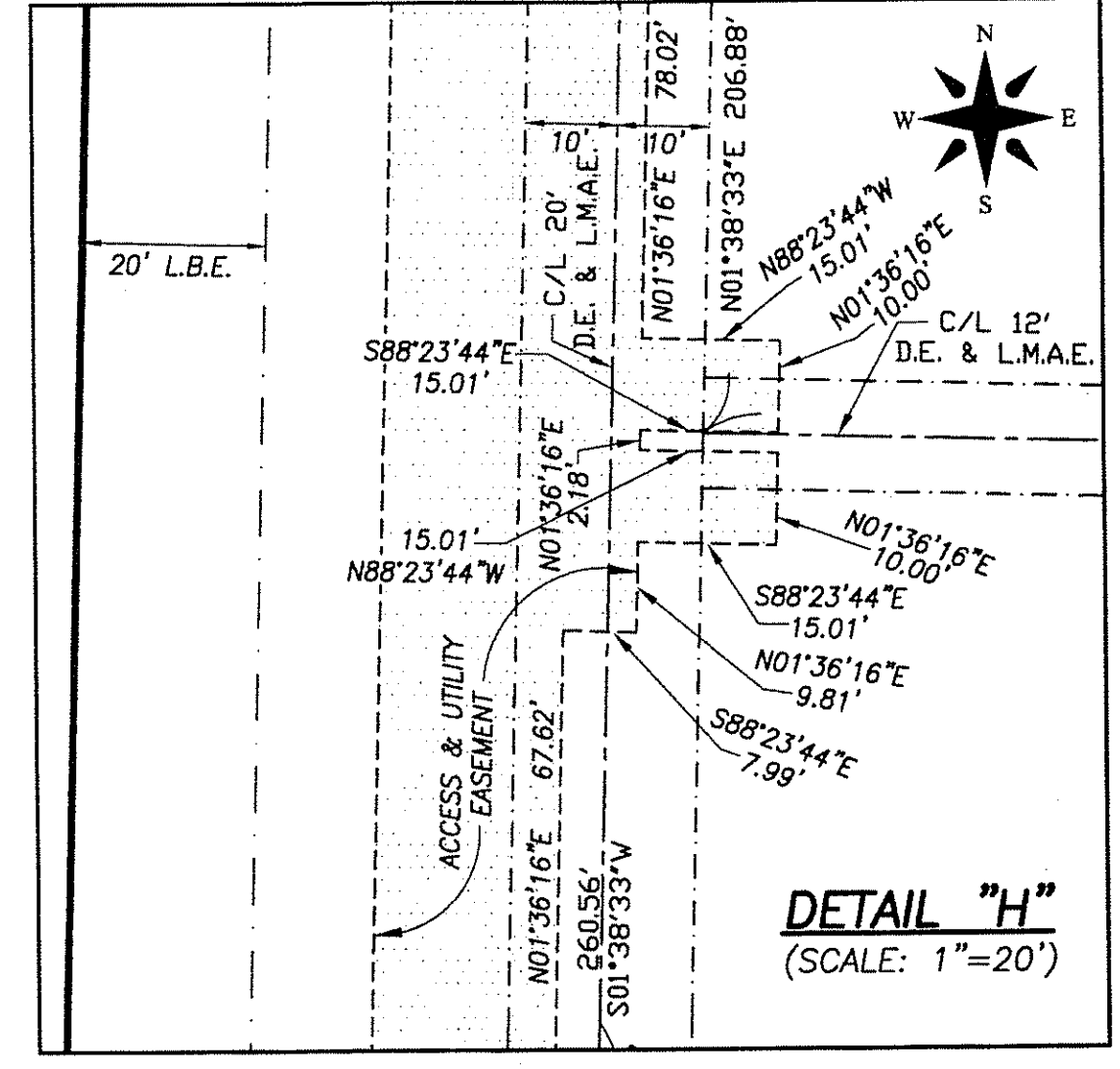
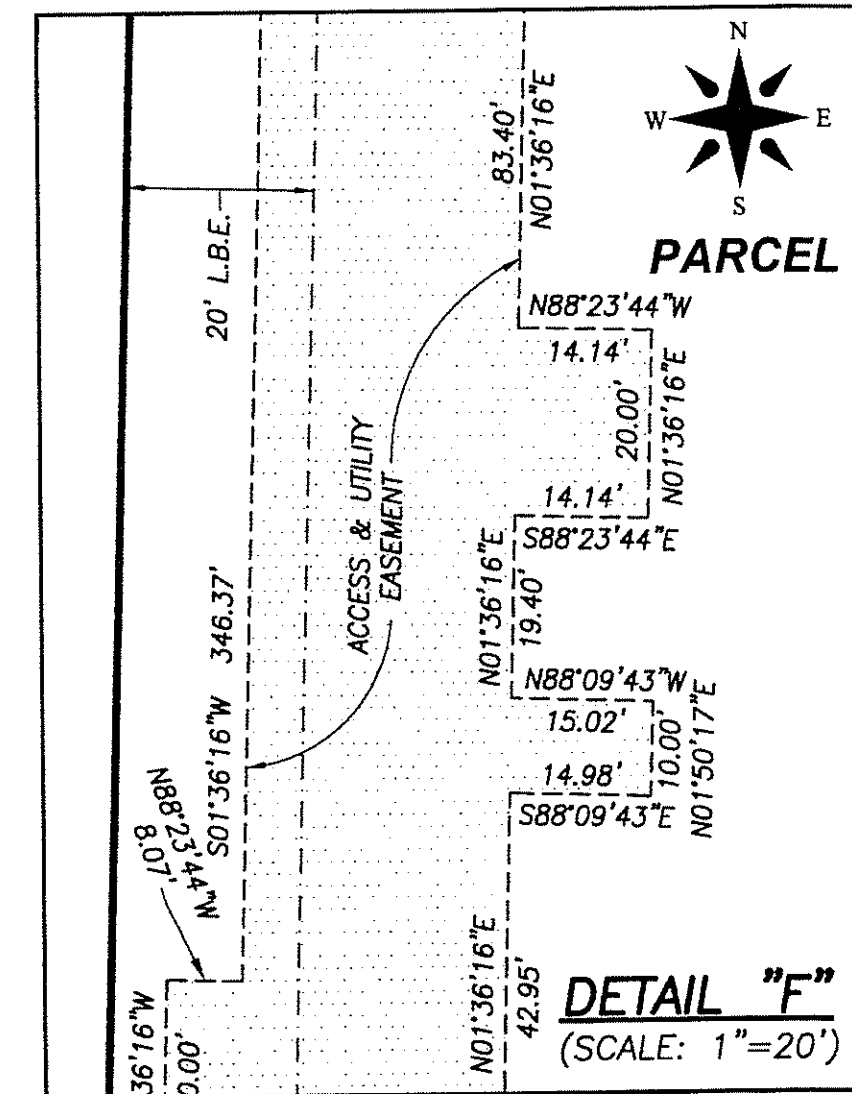
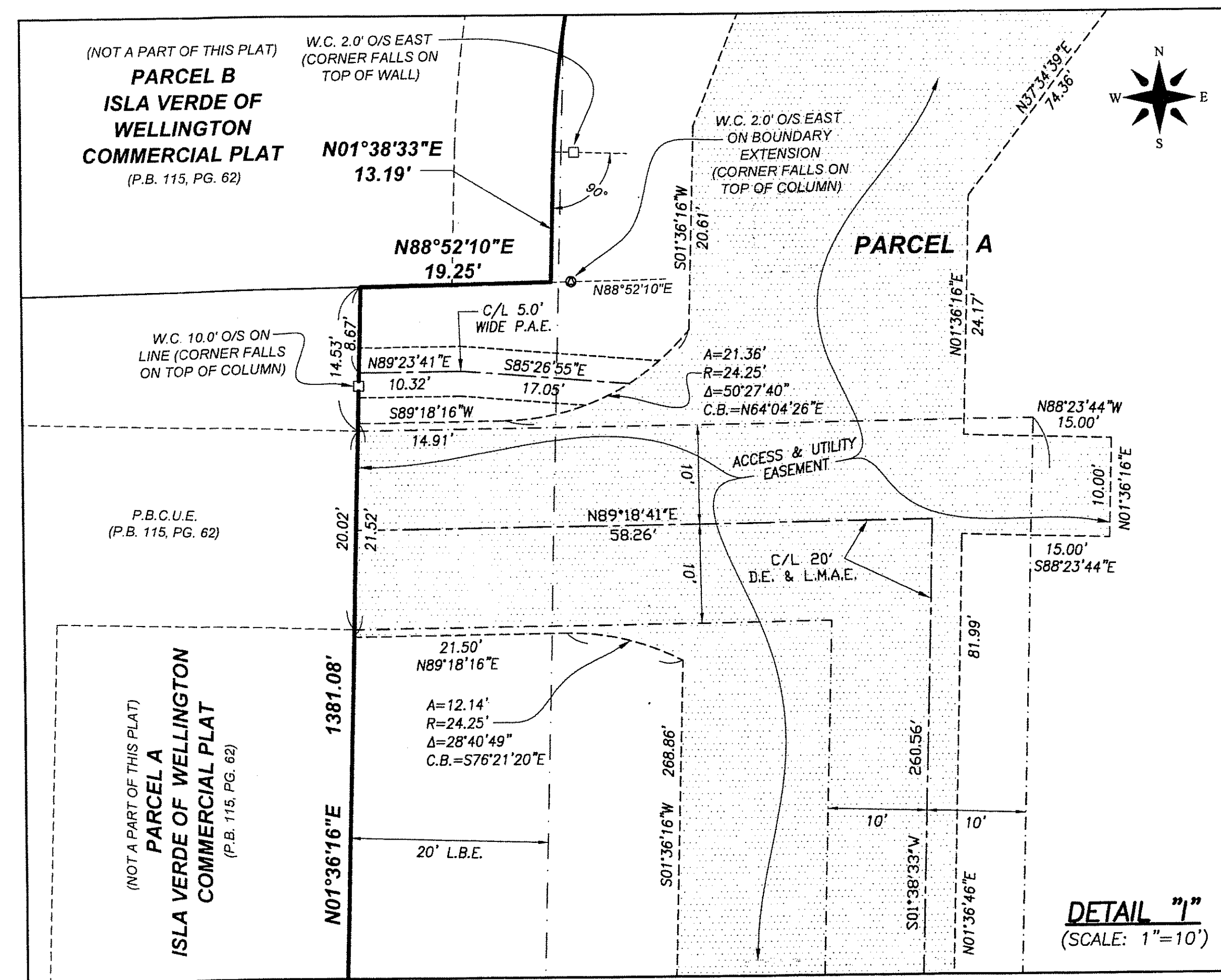
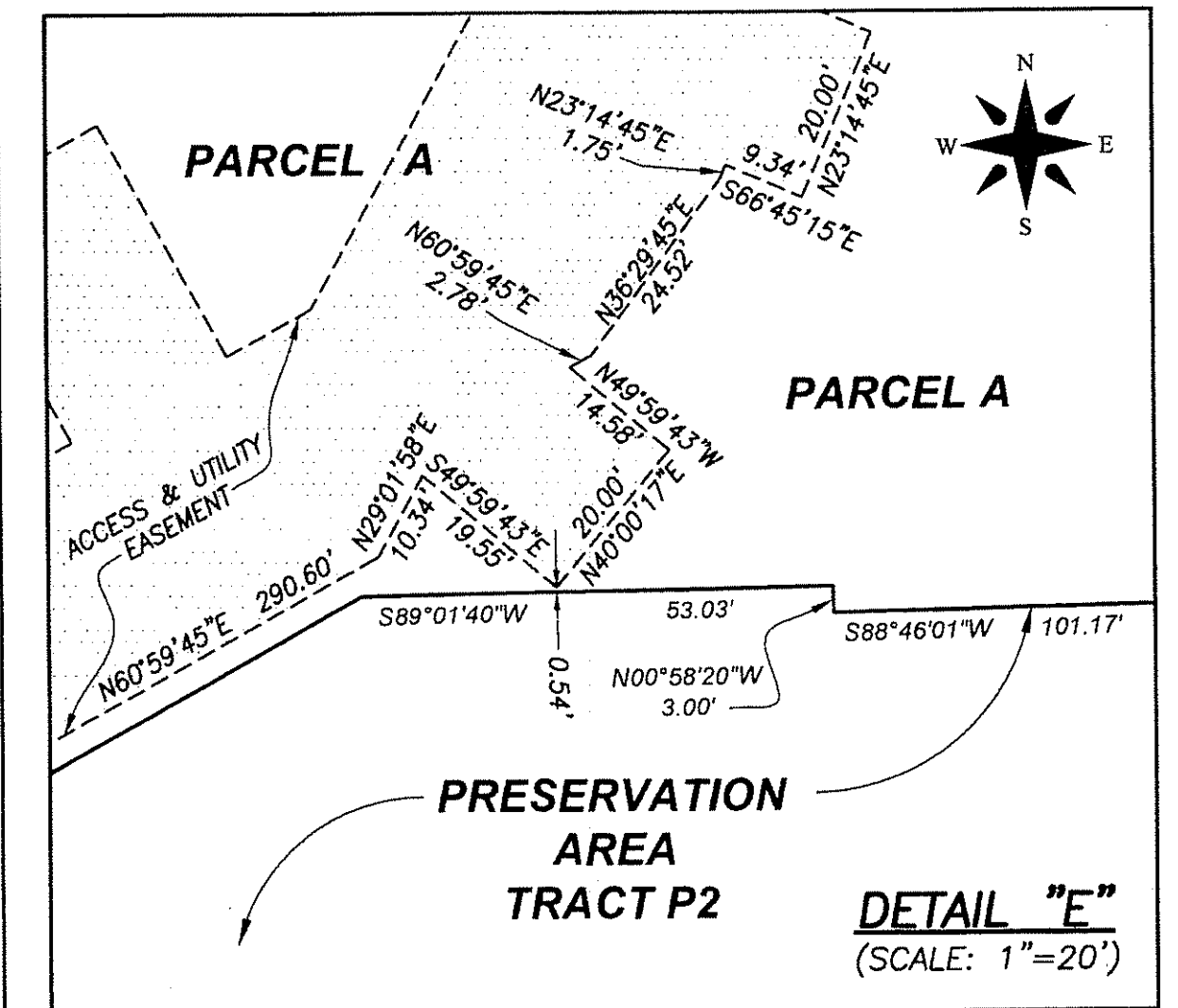
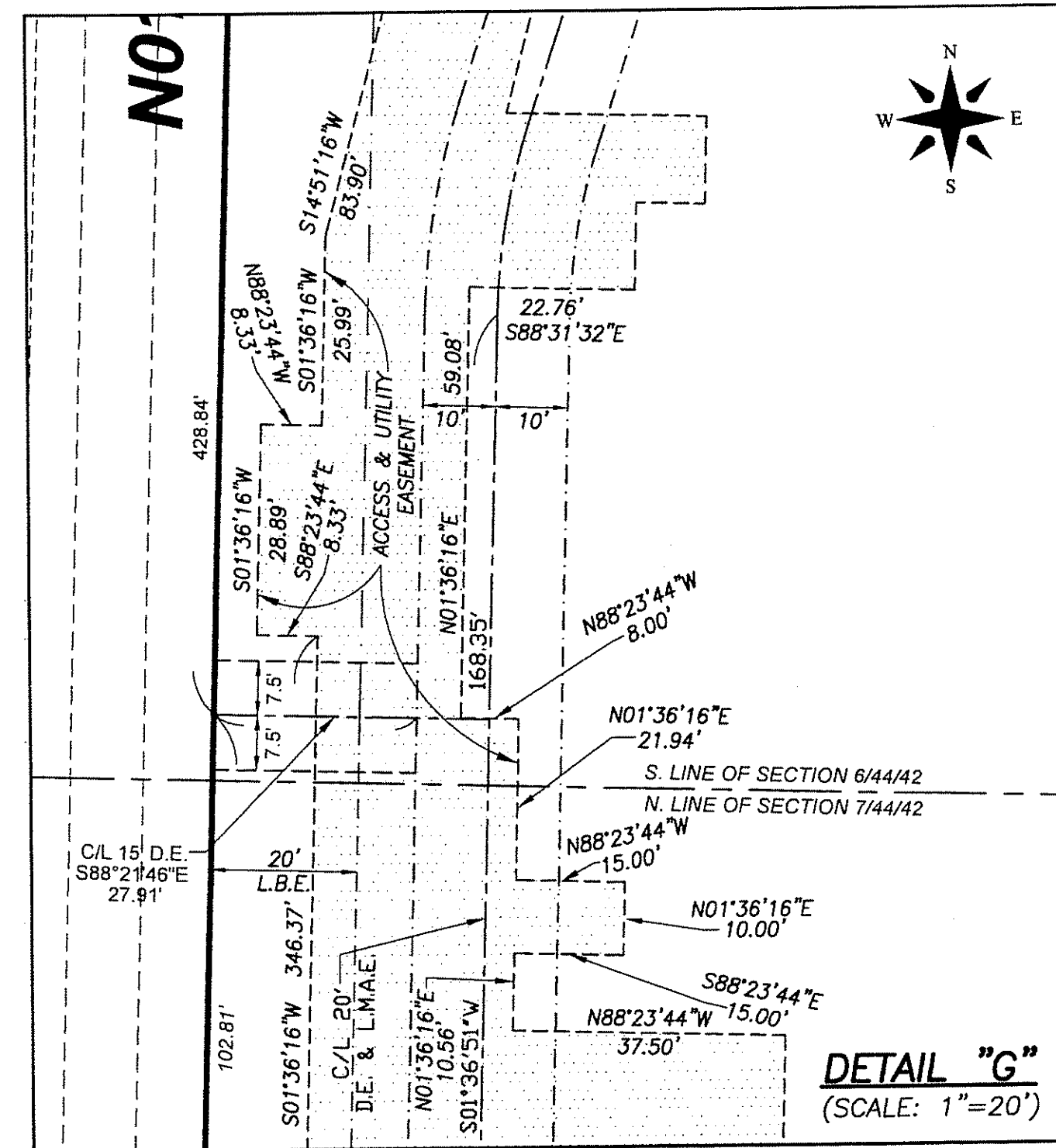
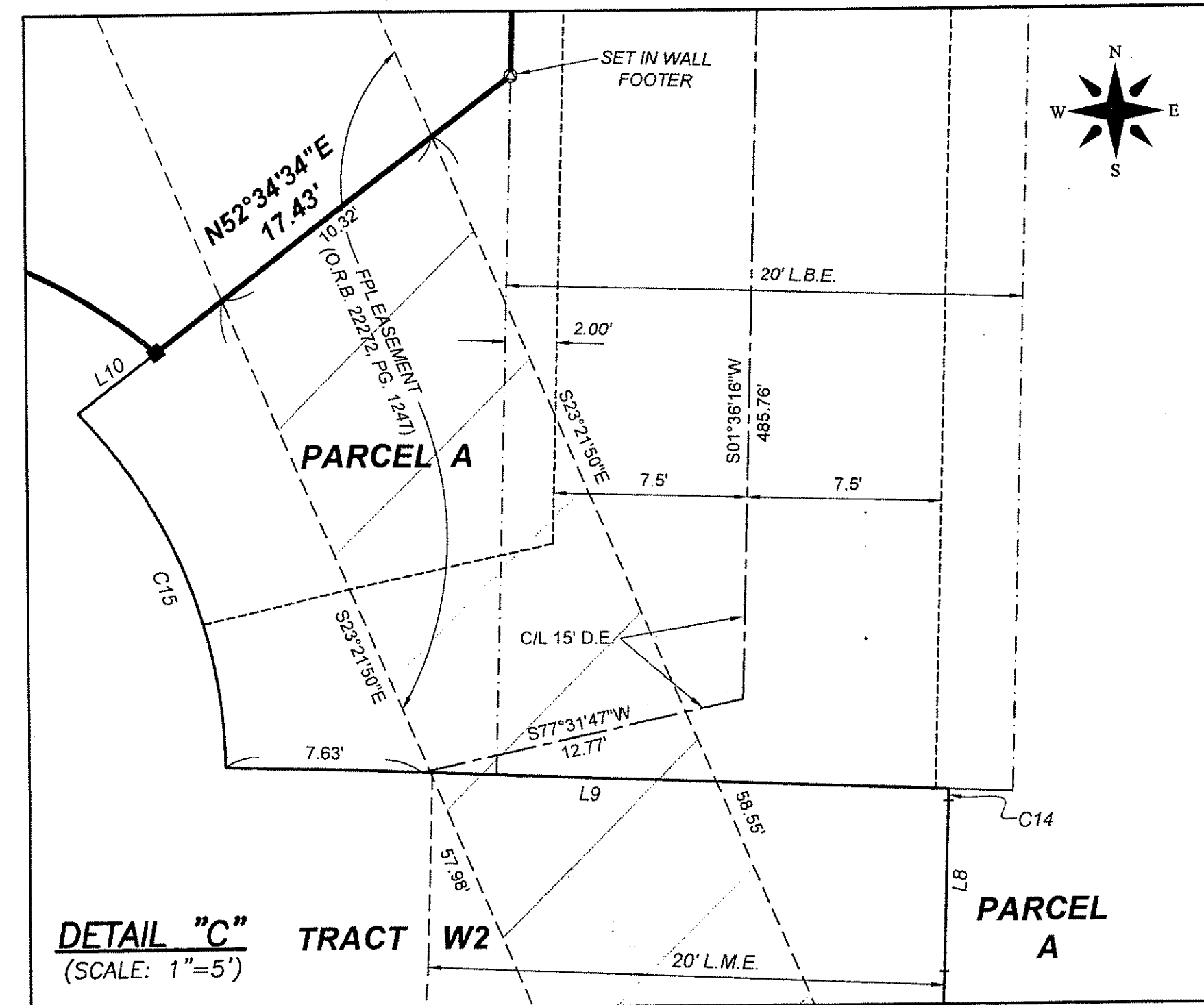
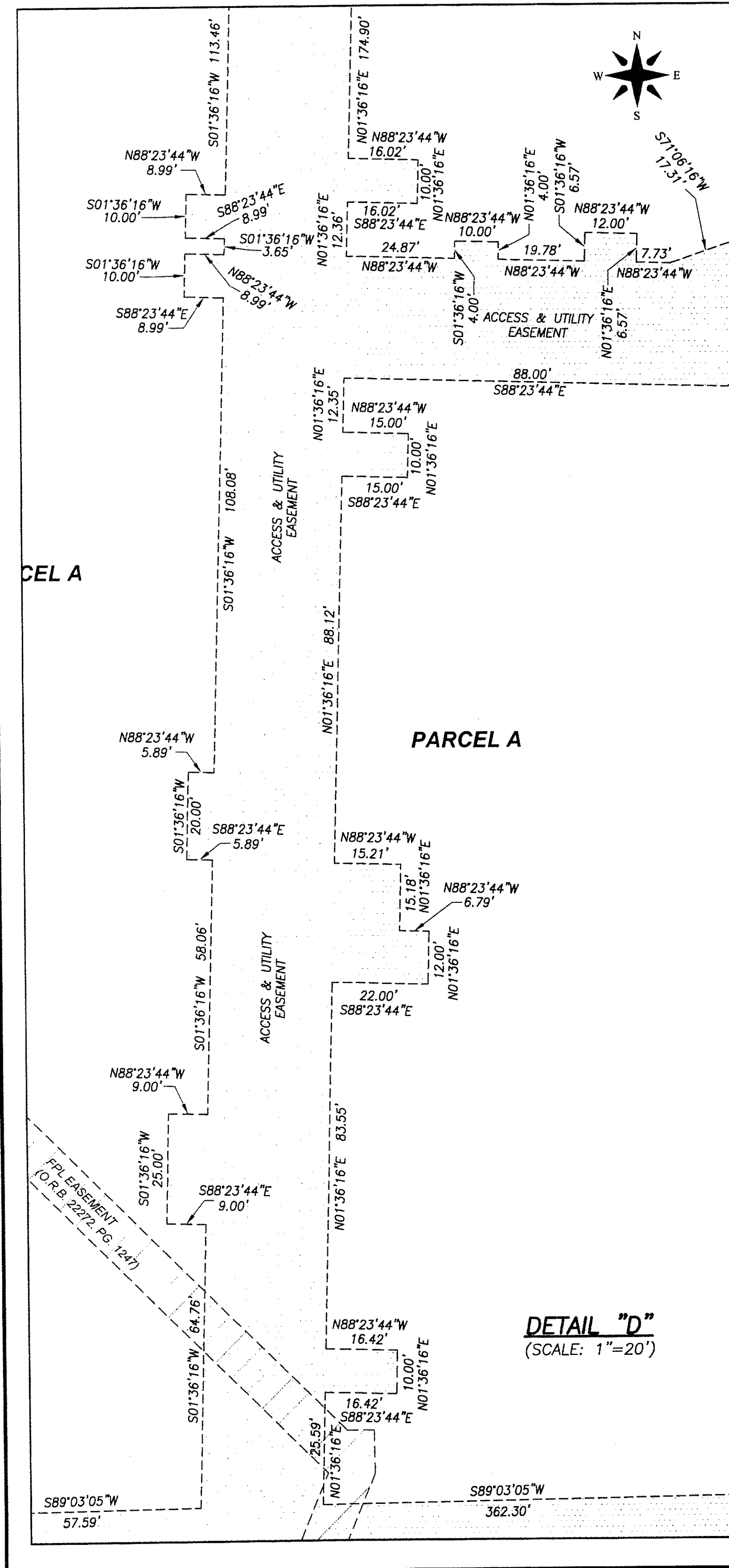
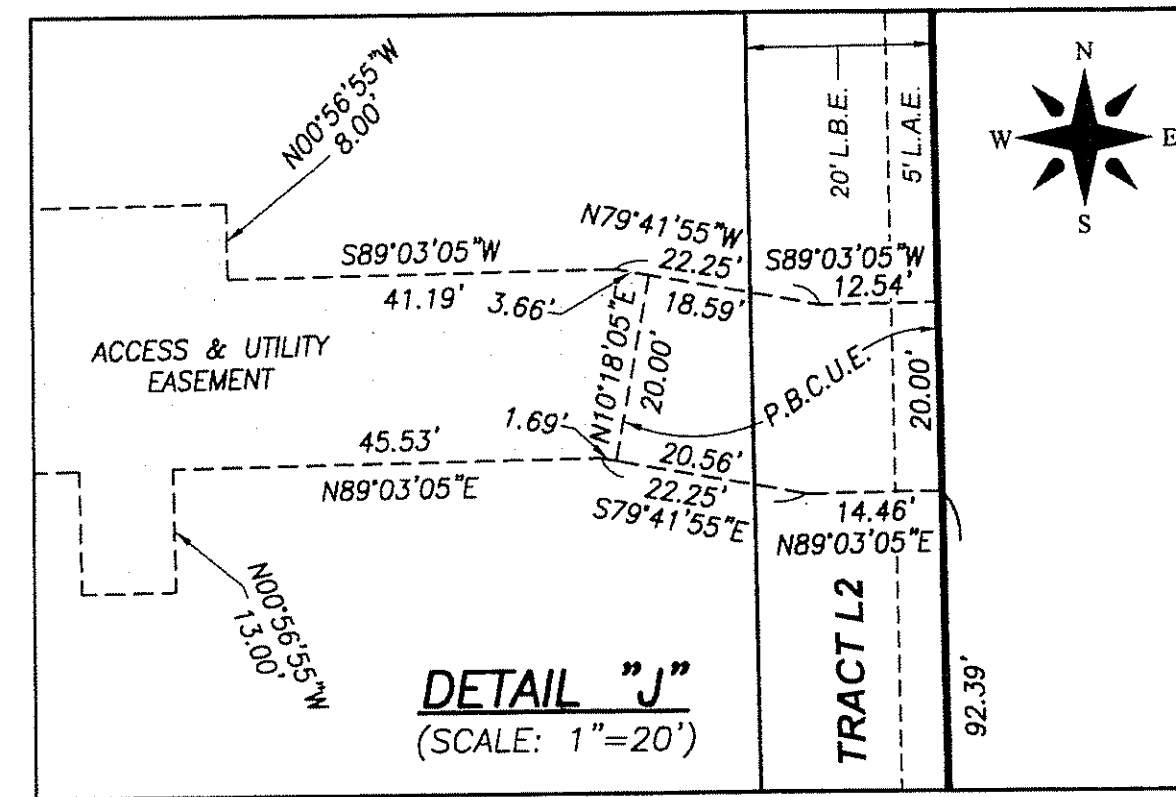
BEING A REPLAT OF ISLA VERDE OF WELLINGTON RESIDENTIAL REPLAT, ACCORDING TO THE PLAT THEREOF, AS RECORDED IN PLAT BOOK 115, PAGES 69 THROUGH 73, PUBLIC RECORDS OF PALM BEACH COUNTY, FLORIDA, LYING IN SECTIONS 6 AND 7, TOWNSHIP 44 SOUTH, RANGE 42 EAST, VILLAGE OF WELLINGTON, PALM BEACH COUNTY, FLORIDA

AUGUST 2015

14

STATE OF FLORIDA  
COUNTY OF PALM BEACH  
THIS PLAT WAS FILED FOR  
RECORD AT \_\_\_\_\_ M.  
THIS \_\_\_\_\_ DAY OF \_\_\_\_\_  
A.D. 20\_\_\_\_ AND DULY RECORDED  
IN PLAT BOOK \_\_\_\_\_ ON  
PAGES \_\_\_\_\_ AND \_\_\_\_\_  
SHARON R. BOCK  
CLERK AND COMPTROLLER  
BY: \_\_\_\_\_  
DEPUTY CLERK

SHEET 5 OF 5



## EASEMENT DETAILS

ABBREVIATIONS/LEGEND			
■	4"x4" CONCRETE MONUMENT FOUND (AS NOTED)	P.A.E.	PEDESTRIAN ACCESS EASEMENT
□	4"x4" CONCRETE MONUMENT WITH DISK STAMPED	P.B.	PLAT BOOK
○	"P.R.M. LB #4569"	P.C.	PAGE
○	SET 5/8" IRON ROD & CAP STAMPED	R.P.B.	ROAD PLAT BOOK
○	"WALLACE LB #4569"	R/W	RIGHT-OF-WAY
○	FOUND IRON ROD AND CAP (AS NOTED)	D.E.	DRAINAGE EASEMENT
○	SET MAG NAIL & DISK STAMPED "P.R.M. LB #4569"	U.E.	UTILITY EASEMENT
○	NAIL & DISK FOUND (AS NOTED)	W.C.	WITNESS CORNER
C/L	CENTERLINE	A	ARC
P.B.C.	PALM BEACH COUNTY	R	RADIUS
P.C.P.	PERMANENT CONTROL POINT	A	CENTRAL ANGLE
P.R.M.	PERMANENT REFERENCE MONUMENT	C.B.	CHORD BEARING
N	NORTHING	P.B.C.U.E.	PALM BEACH COUNTY UTILITY EASEMENT
E	EASTING		
D.B.	DEED BOOK		
L.A.E.	LIMITED ACCESS EASEMENT		
L.M.E.	LAKE MAINTENANCE EASEMENT		
L.M.A.E.	LAKE MAINTENANCE ACCESS EASEMENT		
L.B.E.	LANDSCAPE BUFFER EASEMENT		
L.B.	LICENSED BUSINESS		
O.R.B.	OFFICIAL RECORDS BOOK		
O/A	OVERALL		

**WALLACE SURVEYING**  
CORP. LICENSED BUSINESS # 4569  
5553 VILLAGE BOULEVARD, WEST PALM BEACH, FLORIDA 33407 • (561) 640-4551

FIELD: _____	JOB NO.: 13-1322-11	F.B. WP106 PG. 19
OFFICE: N.I.	DATE: 10/20/2014	DWG. NO. 13-1322-11
CKD: C.W.	REF: 13-1322.DWG	SHEET 5 OF 5